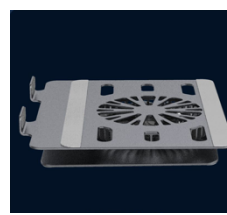
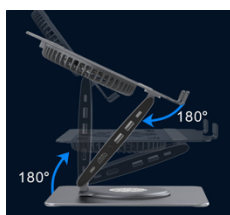
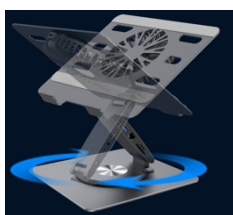


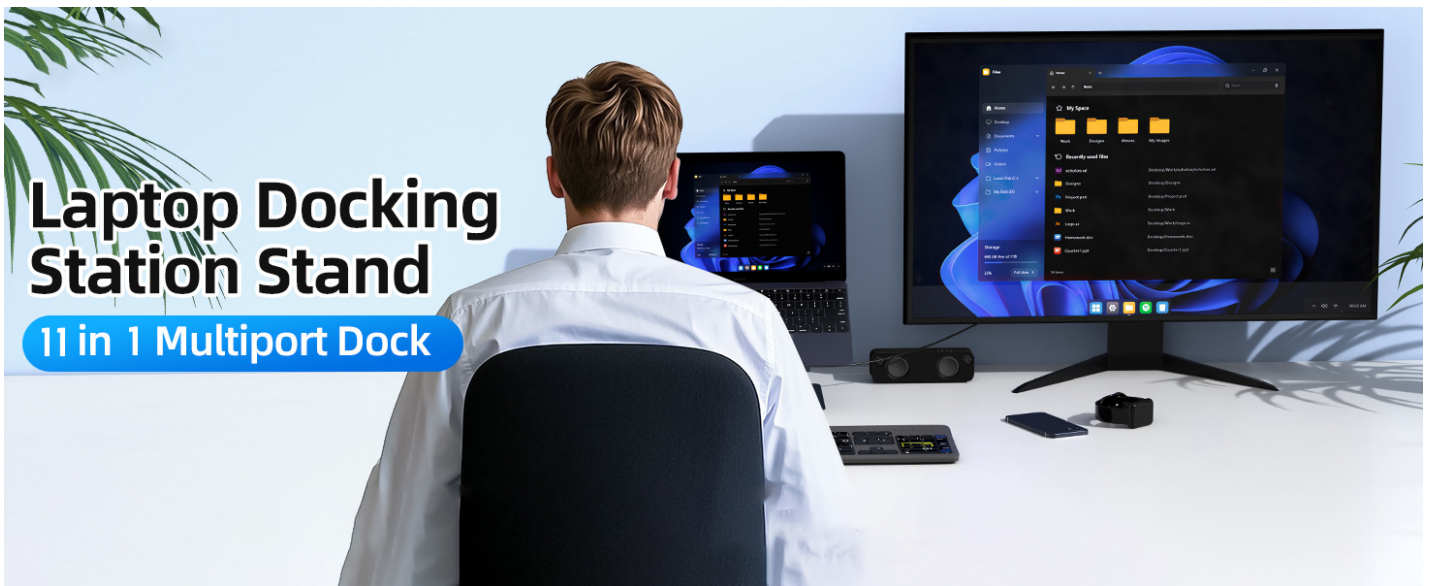
360° Rotatable Laptop Stand with 11-in-1 USB-C Docking Station & Fan

Model: PCR200D+FAN



WiFi Adapter USB Flash Drive Hard Disk Mouse keyboard Mobile phone Camera USB Fan Display screen Headphones TF Card SD Card Notebook Game Controller Sound USB-C

To facilitate your use of this product, please read this manual carefully



Introduction

It is all-in-one solution for seamless connectivity and ergonomic tablet support. The stand offers adjustable height and angle for optimal ergonomic positioning, along with a 360° rotating base for flexible working positions. The docking station includes HDMI, USB-C PD, Audio combo jack, USB-A, and USB-C ports, as well as card readers for SD and MicroSD/TF cards. This docking station transforms your workspace and expands your connectivity options with ease. With a USB-C cable connection, it then provides HD video output, a 100W PD charging port, audio connectivity, power input, and dual USB 3.0 ports for high-speed data transfer, offering an array of features to enhance productivity and convenience.

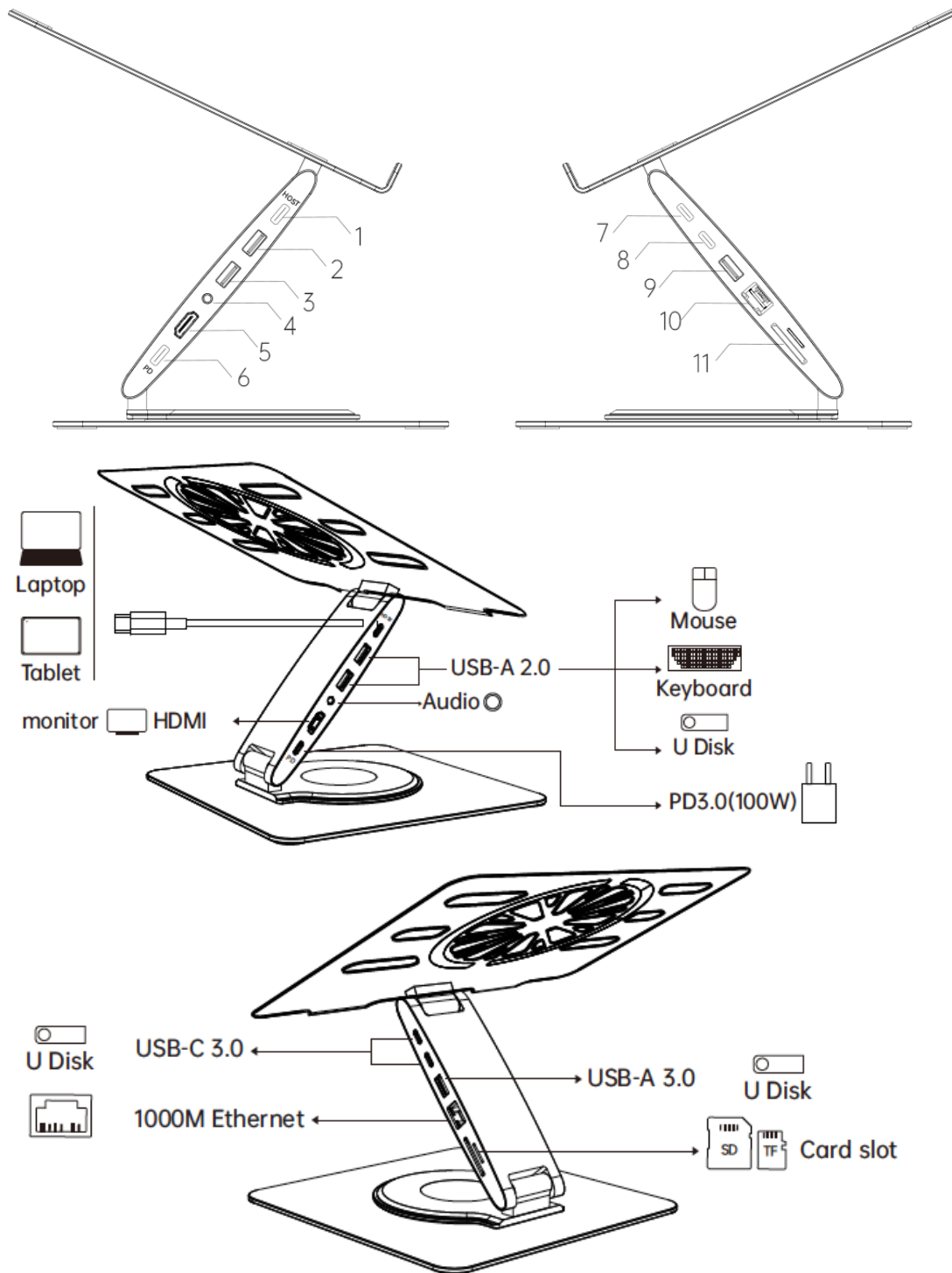
Say goodbye to cluttered desks and tangled cables - our docking station consolidates all your essential connections into one sleek hub.

Say goodbye to discomfort and hello to efficiency with the USB-C Docking Station and Laptop Stand. Elevate your workspace today and experience the ultimate in connectivity, versatility, and performance. Perfect for home entertainment, office presentations, and classroom teaching.

Features

- Adjustable height and angle for optimal ergonomic positioning
- 360° rotating base for flexible working positions
- Supports HDMI resolution up to 4K 60Hz
- Supports USB Power Delivery (PD) up to 100W
- Supports USB-A and USB-C ports with 5Gbps transfer speed
- Supports SD 3.0 and MicroSD/TF 3.0 slots
- Supports 3.5mm audio combo jack for headphones and microphone
- Multi-platform support: Windows, Chrome, Linux, and Android systems
- Plug-and-play functionality for hassle-free setup
- Heat conduction alloy and fan-ventilation design prevent overheating
- Supports tablet and laptops from 7" to 17.3"
- Foldable and portable design for on-the-go convenience
- Silicone padding prevents scratches and secures devices

Ports and Connection



1.Host: Connect USB-C interface devices that comply with the USB 3.1 specification or higher.

2/3.USB-A2.0: Speed up to 480Mbps,5V/0.5A@2.5W.

4.3.5mm Audio Jack.

5.HDMI: Resolution up to 4K/60HZ, and downward compatible with 1080P.

6.PD3.0: Support 100W power in, however charging is limited with 87W for safety.

7/8.USB-C3.0: Speed up to 5Gbps, 5V/0.9A@4.5W.

9.USB-A3.0: Speed up to 5Gbps, 5V/0.9A@4.5W.

10.RJ45: Ethernet speed to 1000Mbps, no driver required.

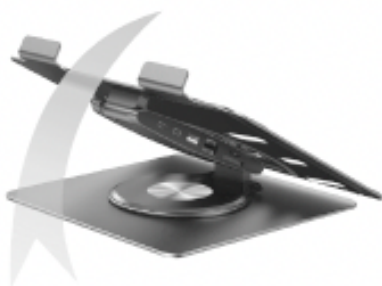
11.SD/TF: Data transfer rates are subject to the speed of the memory card itself and your device.

Data Sheet

Model		PCR200D+FAN
Warranty		1 year
Features	Adjustable Join Types 4K Support Industry Standard	yes Hinge & 360 pivot yes USB 2.0 & USB3.0/3.1
Interface(s)	Host Bus Type Host Connector Connector Type Rate	USB Type C 3.1 USB Type C 1xUSB A 3.0 (5Gbps) 1xUSB-C 3.0 (5Gbps) 1xHDMI 1.4 1xUSB-C PD100w Fast Charging Port 1xSD Card Slot 1xMicro SD Card Slot 1x3.5mm Audio Jack 1xRJ45 Gigabit Network Port 2xUSB A 2.0 (480Mbps)
Performance	Mount Design For Max Digital Resolution Max Analog Resolution Audio Specification	Phone/Tablet/Laptop 7" to 17.3" 4K @ 60Hz 4K @ 60Hz 3.5mm Audio(Micro+earphone)
Software	OS Compatibility	Win7 or higher Chrome Linux Android iPad OS Mac OS
Environment	Operating Temperature Storage Temperature	-20°C to 70°C -30°C to 120°C
Material		Aluminum Alloy(with silicone pads)
Color		Grey
Package	Product Size	
	Product Net Weight	2.43lb(1100g)
	Package Size	315mmx280mmx70mm
	Gross Weight	1.47Kgs(about 1.6kgs with fan)
	Carton Size	56x40x32cm
What's in the Box		12pcs/CTN (17.2kgs/CTN), Fan packed individually
Notes		USB-C Stand & Dock, USB-C to USB-C Cable, User's Manu it holds up to 18lbs(>8kgs)

How to use it correctly

Step1.Open



1.Lift it up with force



2.Lift it up with force

Step2.Connect

1.Use the included cable, connect one end to laptop's USB-C port



2.connect the other end to the HOST port on the stand

3.After connecting, all the ports on the stand can be used simultaneously

Step3.Power



Powering Method 1

Use the original laptop charger to connect the laptop's charging port for power supply



Powering Method 2

Use a PD(100W) charger to connect to the dock's PD port for power supply (The original laptop PD charger also may connect to the dock's PD port)

Frequently Asked Questions

Question 1: None of the docking station ports are working?

Answer 1: This may be due to an incorrect connection between the laptop and the docking station. To connect properly, use the included dual USB-C cable. Connect one end to the full-function USB-C port on your laptop. connect the other end to the HOST port on the docking station of the stand.

Question 2: The charger plugged into the PD port on the docking station does not power the laptop?

Answer 2: Ensure that the charger is a PD (Power Delivery) charger, and the charger's power output is 100W or higher.

Question 3: HDMI is not displaying on the external monitor?

Answer 3: Confirm that the USB-C port on your laptop is a full-function port (supporting display, data transfer, and power delivery).

Check if the HDMI cable is securely connected to both the docking station and the external monitor.

Question 4: What are the main functions of USB-C ports?

Answer 4: The USB-C port on the stand supports data transfer and 4.5W power supply. However, it does not support display output, please use HDMI port to connect to an external monitor.

Question 5: No sound from the headphones when plugged into the audio jack?

Answer 5: Check the audio settings to ensure the sound output is set to the headphones. Verify that the headphone jack is securely plugged in.

Question 6: No internet connection when the Ethernet cable is plugged into the network port?

Answer 6: Confirm whether the network port's indicator light is blinking, indicating normal operation. Check the network settings to ensure the connection is active and not disabled. Make sure the Ethernet cable is securely connected to the port.

Question 7: USB devices (e.g., flash drive, mouse, keyboard) are not working?

Answer 7: Check if the devices are properly plugged in. Try reconnecting them or restarting your computer. For wireless keyboards and mice, ensure they have sufficient battery power.

Question 8: TF card or SD card is not working?

Answer 8: Check if the TF card or SD card is properly inserted. Try reinserting them or restarting your computer.

Note: When both TF card and SD card are used simultaneously, the device will prioritize reading the card that was inserted firstly.

Question 9: Why does it require a lot of force to open the stand?

Answer 9: The stand is designed with a higher torque setting, for the rotating axis, which requires more force to open. However, this design significantly enhances the stand's stability and reliability, ensuring safety and preventing potential risks such as loosening or collapsing.

Question 10: Why does my laptop stand tip over?

Answer 10: This stand is designed for laptops ranging from 7 to 17.3 inches. When adjusting the height of the stand, ensure the center of gravity is balanced. If the center of gravity is too off-center, the laptop may become unstable and tip over. Adjust the center of gravity properly, and the laptop will sit securely on the stand.

Question 11: How to contact our team?

Answer 11: You can contact us by email (sales@originneo.com) or whatsapp (+8619540244520).